

Flight simulation use only

UAAA/ALA
ALMATY

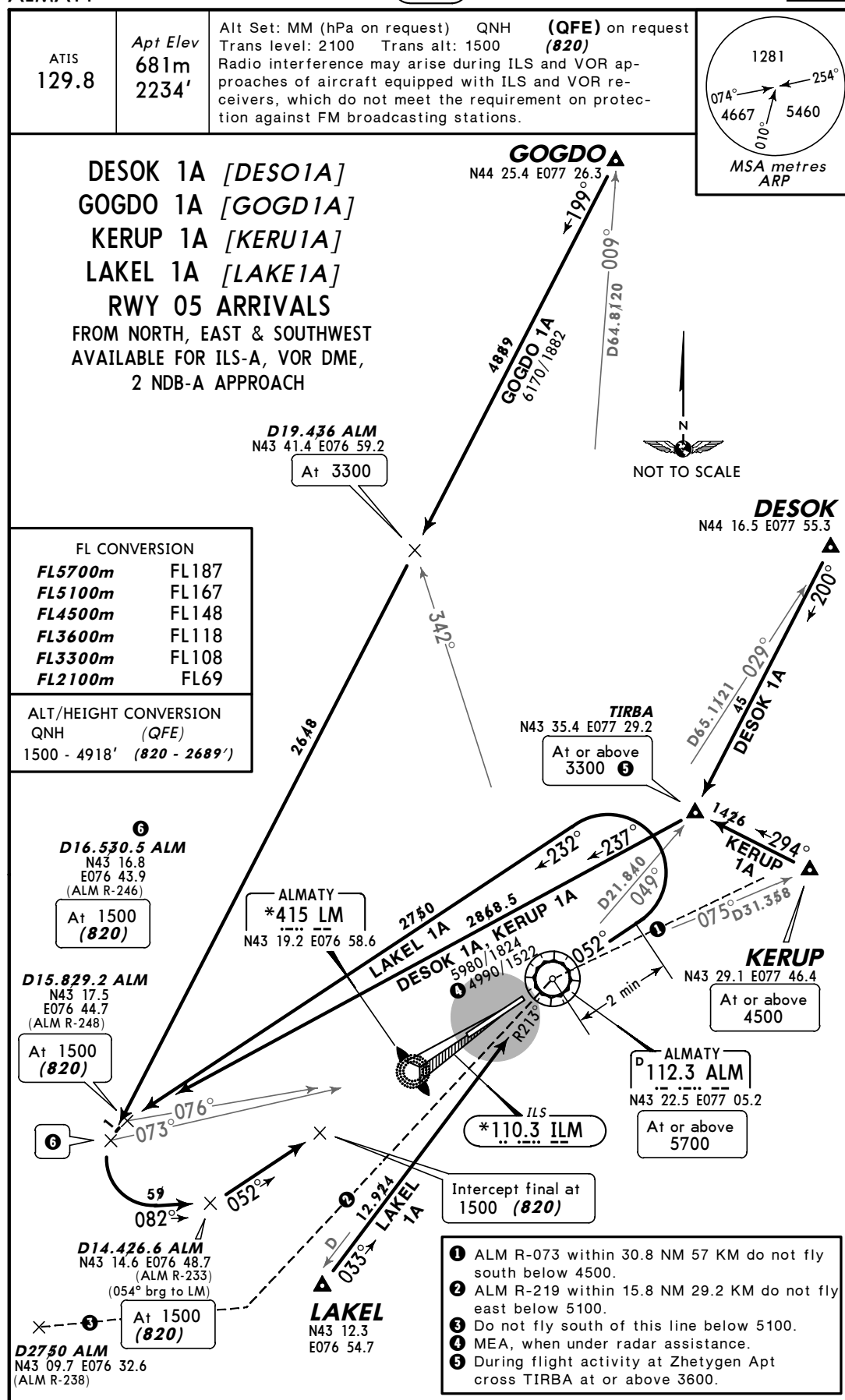
20 AUG 07

10-2

Eff Aug

ALMATY, KAZAKHSTAN

STAR



Flight simulation use only

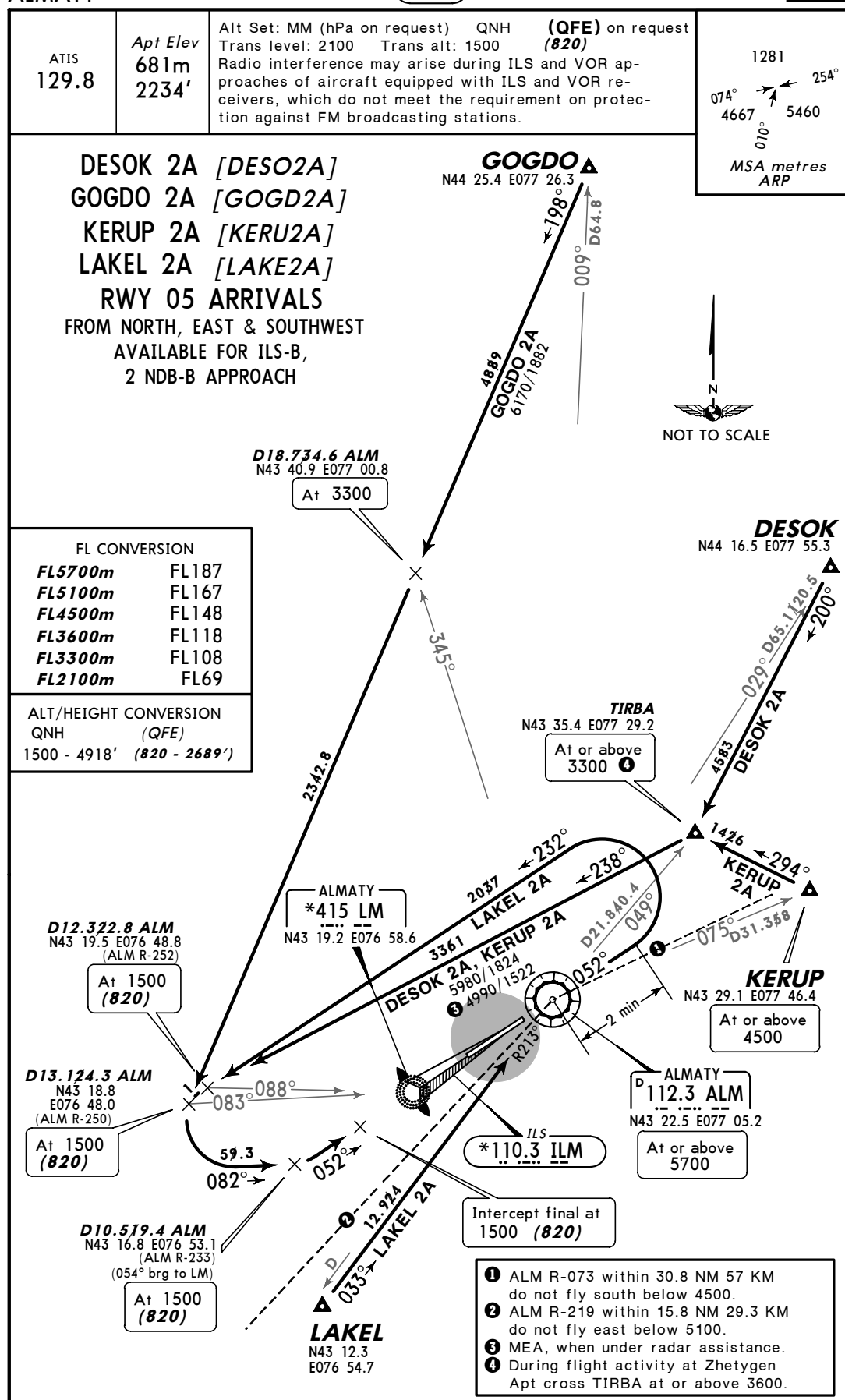
UAAA/ALA
ALMATY

20 AUG 07 (10-2A)

Eff Aug

ALMATY, KAZAKHSTAN

STAR



Flight simulation use only

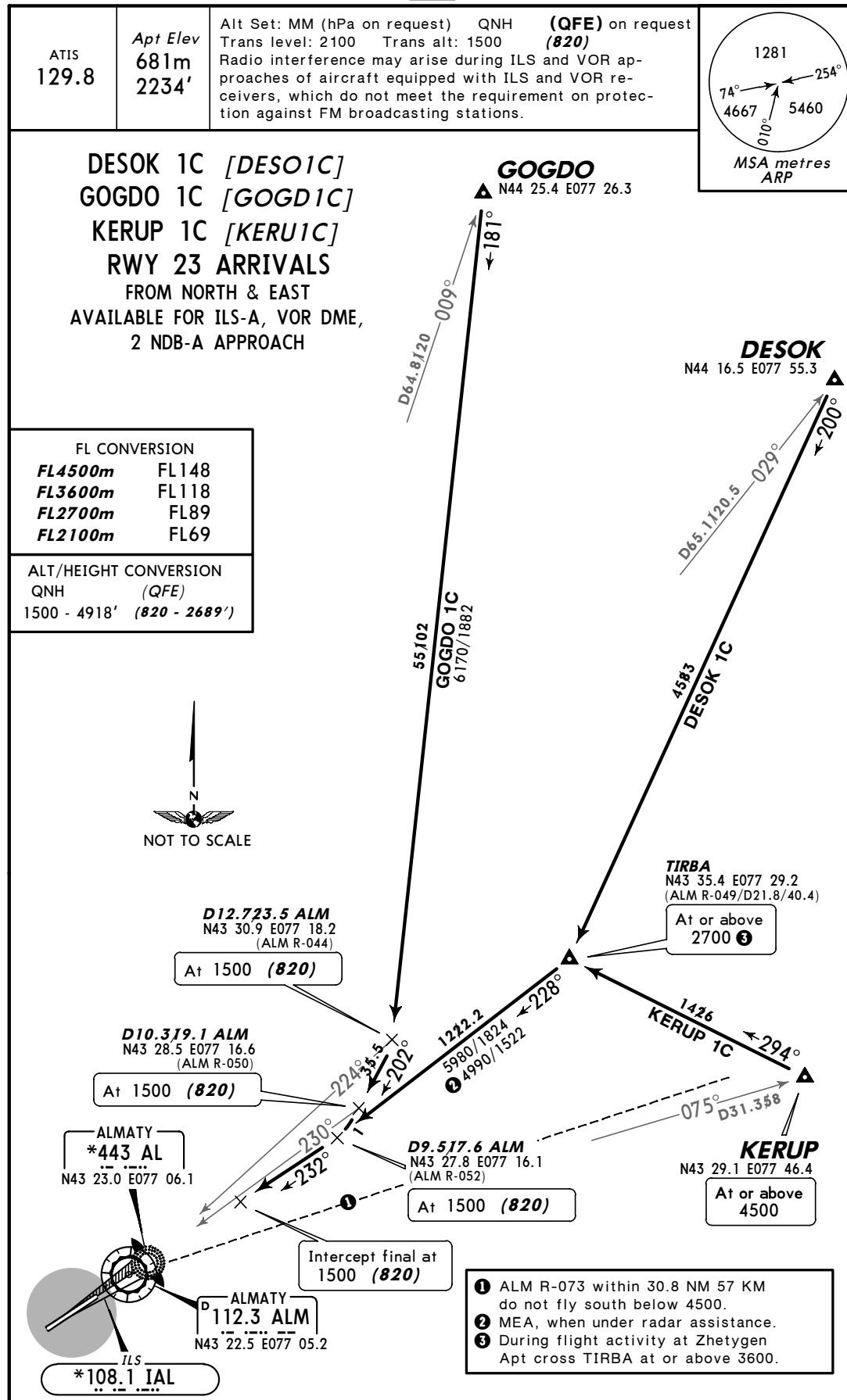
UAAA/ALA
ALMATY

21 AUG 07 **10-2B**

Eff Aug

ALMATY, KAZAKHSTAN

STAR



Flight simulation use only

UAAA/ALA
ALMATY

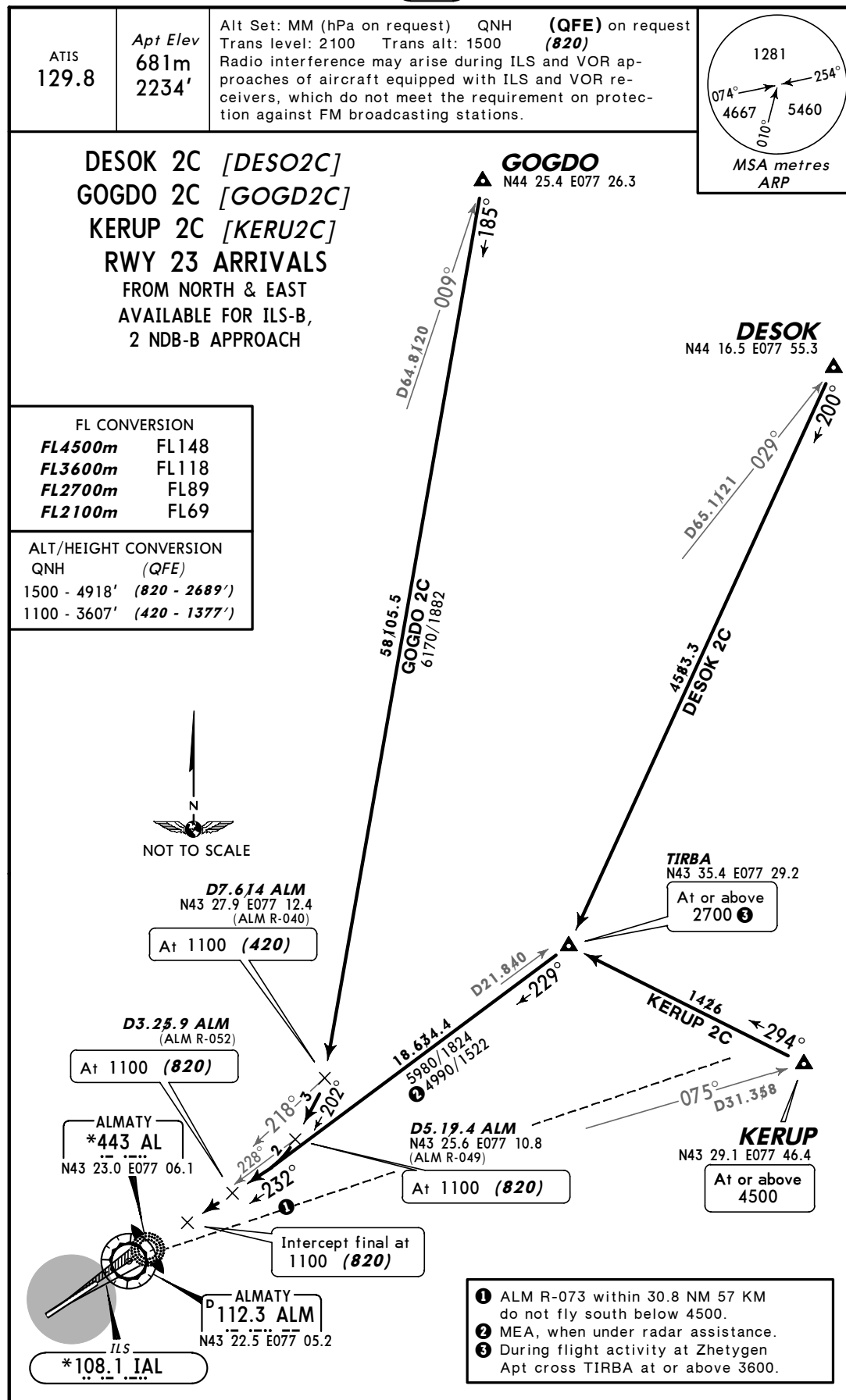
21 AUG 07

10-2C

Eff Aug

ALMATY, KAZAKHSTAN

STAR



CHANGES: QNH by default, trans alt

Based on Jeppesen charts © JEPPESEN SANDERSON, INC., 2002, 2006. ALL RIGHTS RESERVED.

Flight simulation use only

UAAA/ALA
ALMATY

21 AUG 07

10-2D

Eff Aug

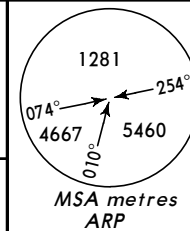
ALMATY, KAZAKHSTAN

STAR

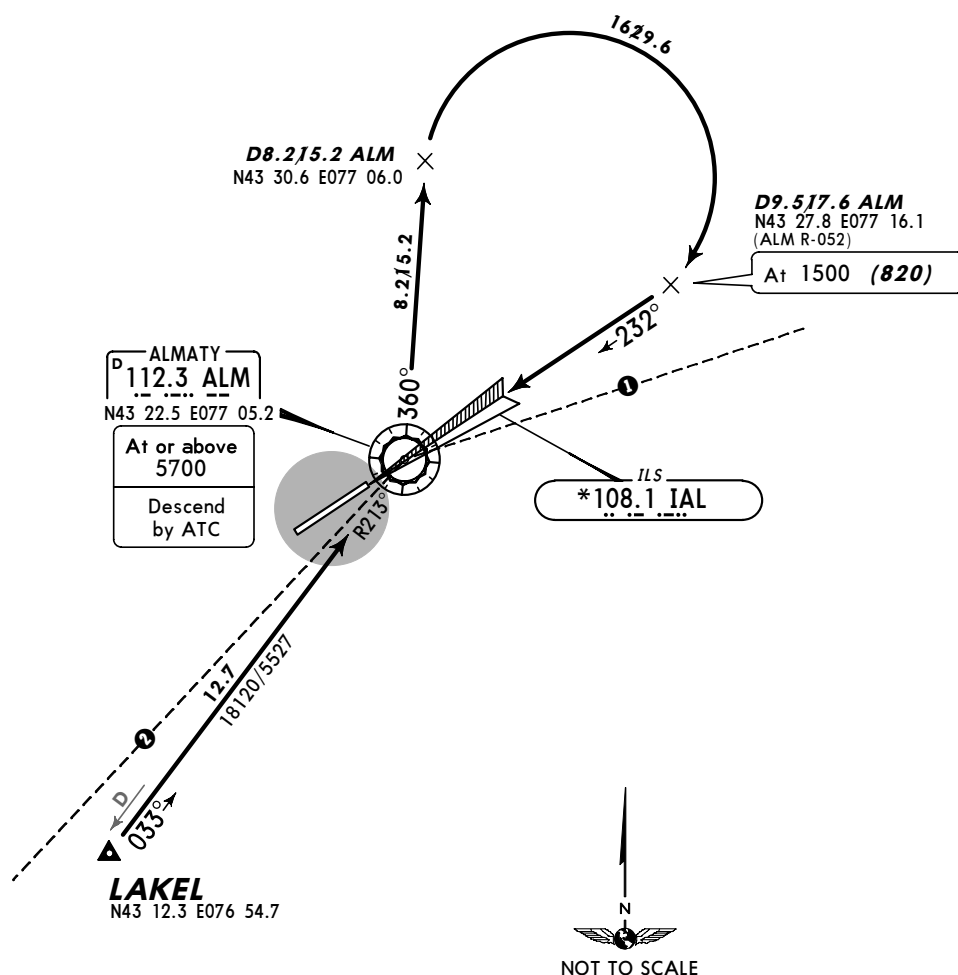
ATIS
129.8

Apt Elev
681m
2234'

Alt Set: MM (hPa on request) QNH (QFE) on request
Trans level: 2100 Trans alt: 1500 (820)
Radio interference may arise during ILS and VOR approaches of aircraft equipped with ILS and VOR receivers, which do not meet the requirement on protection against FM broadcasting stations.



LAKEL 1C [LAKE1C]
RWY 23 ARRIVAL
FROM SOUTHWEST
AVAILABLE FOR ILS-A, VOR DME,
2 NDB-A APPROACH



- ① ALM R-073 within 30.8 NM 57 KM
do not fly south below 4500.
- ② ALM R-219 within 15.8 NM 29.3 KM
do not fly east east below 5100.

FL CONVERSION

FL5700m	FL187
FL5100m	FL167
FL4500m	FL148
FL2100m	FL69

ALT/HEIGHT CONVERSION

QNH (QFE)
1500 - 4918' (820 - 2689')

Flight simulation use only

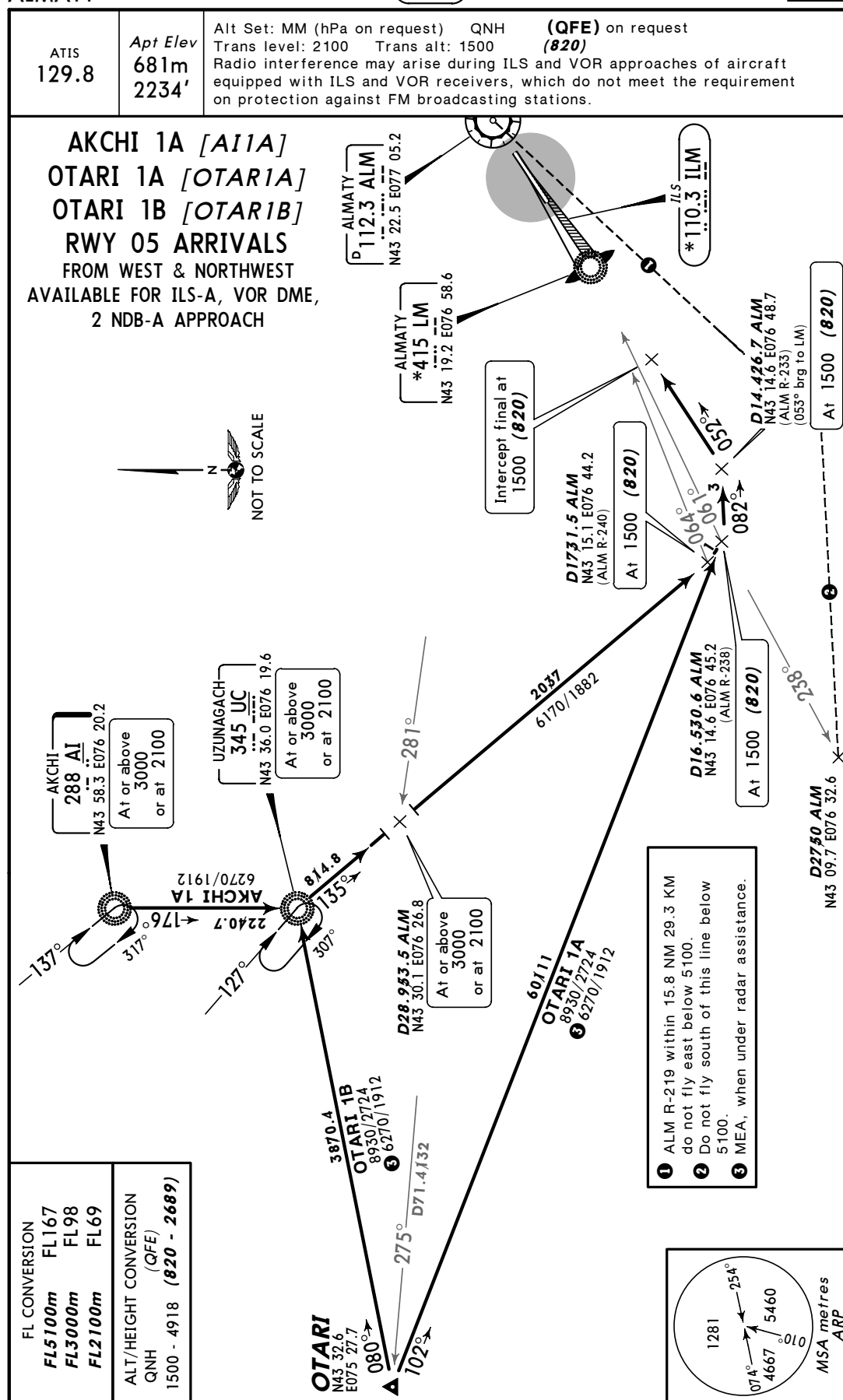
UAAA/ALA
ALMATY

22 AUG 07 10-2F

Eff Aug

ALMATY, KAZAKHSTAN

STAR



CHANGES: QNH by default, trans alt

Based on Jeppesen charts © JEPPESEN SANDERSON, INC., 2002, 2003. ALL RIGHTS RESERVED.

Flight simulation use only

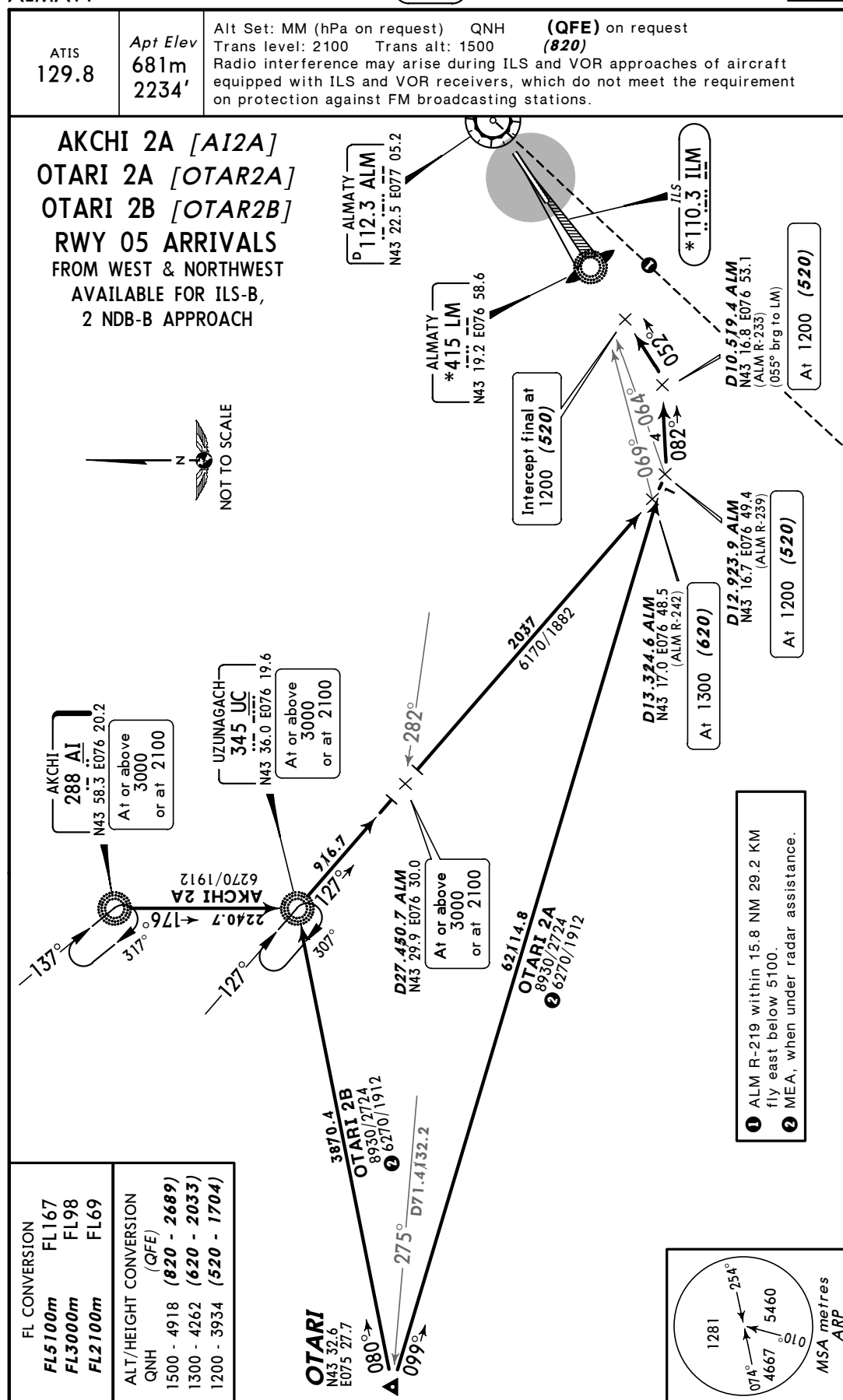
UAAA/ALA
ALMATY

22 AUG 07 10-2G

Eff Aug

ALMATY, KAZAKHSTAN

STAR



CHANGES: QNH by default, trans alt

Based on Jeppesen charts © JEPPESEN SANDERSON, INC., 2002, 2003. ALL RIGHTS RESERVED.

Flight simulation use only

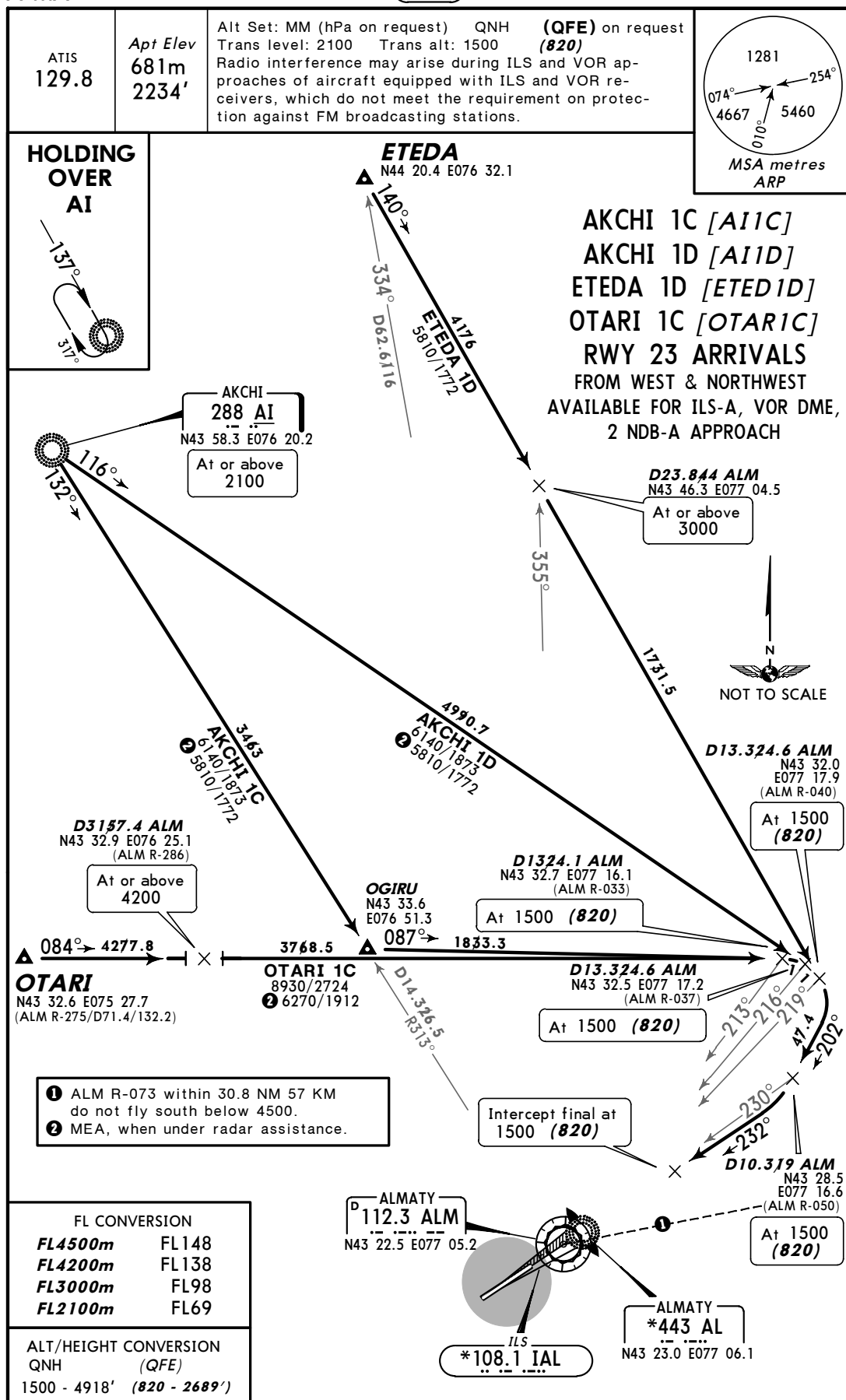
UAAA/ALA
ALMATY

ALMATY, KAZAKHSTAN

22 AUG 07 (10-2H)

Eff Aug

STAR



CHANGES: QNH by default, trans alt

Based on Jeppesen charts © JEPPESEN SANDERSON, INC., 2002, 2003. ALL RIGHTS RESERVED.

Flight simulation use only

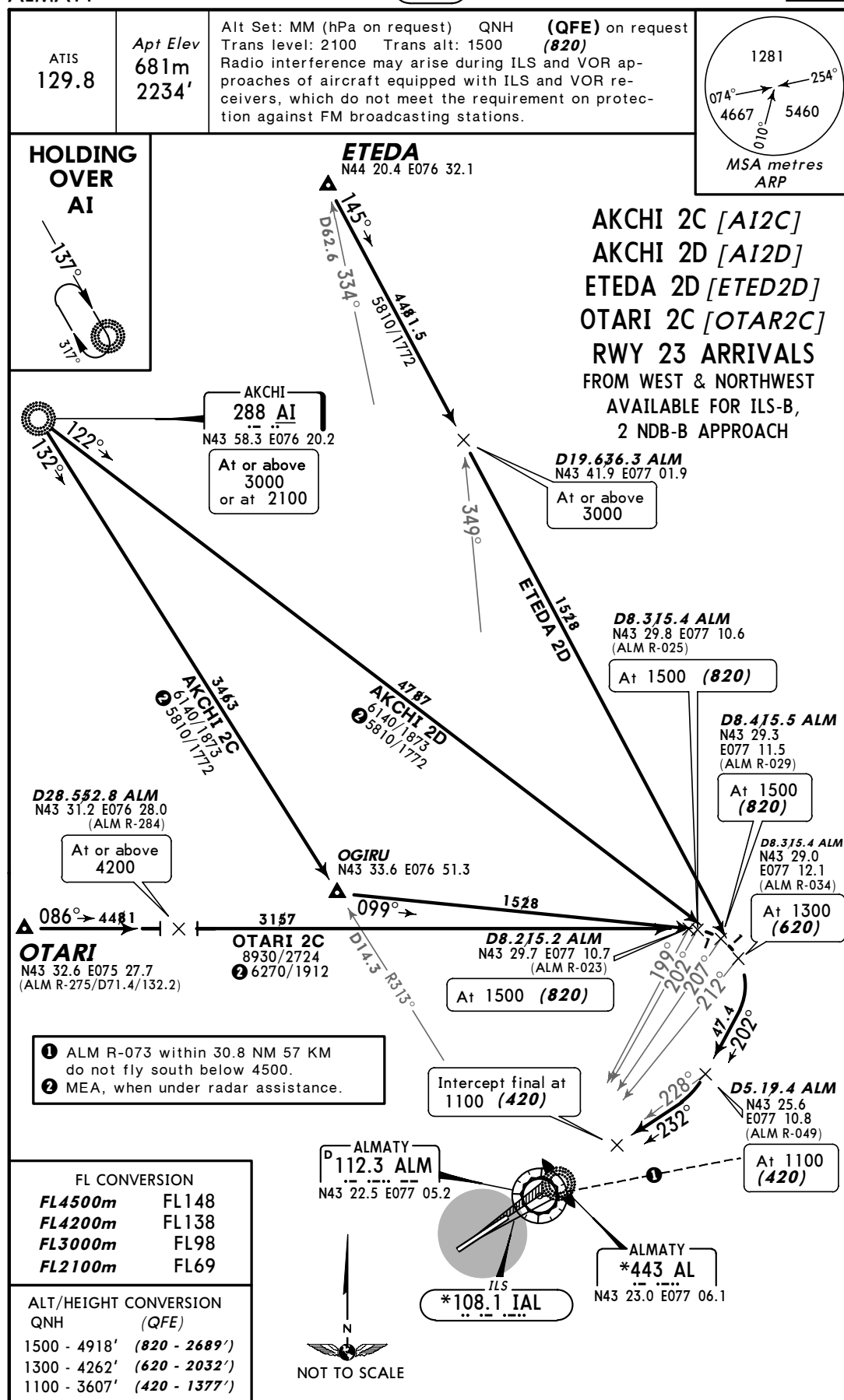
UAAA/ALA
ALMATY

22 AUG 07 10-2J

Eff Aug

ALMATY, KAZAKHSTAN

STAR



CHANGES: QNH by default, trans alt

Based on Jeppesen charts © JEPPESEN SANDERSON, INC., 2002, 2003. ALL RIGHTS RESERVED.

Flight simulation use only

UAAA/ALA
ALMATY

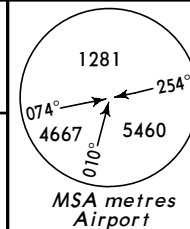
ALMATY, KAZAKHSTAN

24 AUG 07 10-3

Eff Aug

SID

Apt Elev 681m 2234'
QNH (QFE) on request Trans level: 2100 Trans alt: 1500 (820)
Radio interference may arise during departure of aircraft equipped with VOR receivers, which do not meet the requirement on protection against FM broadcasting stations.



ETEDA 1F [ETED1F]
GOGDO 1E [GOGD1E]
RWY 05 DEPARTURES
TO NORTH

ETEDA
N44 20.4
E076 32.1

GOGDO
N44 25.4
E077 26.3

ALT/HEIGHT CONVERSION
QNH (QFE)
1000 - 3278' (320 - 1049')
1500 - 4918 (820 - 2689')

FL CONVERSION
FL2100m FL69
FL2700m FL89
FL3900m FL128
FL4500m FL148

D19.936.9 ALM
N43 41.9 E076 59.2

At 2700 or
at or above
3900

ALMATY
D 112.3 ALM
N43 22.5 E077 05.2

① R-073 from ALM within
30.8nm 57km do not fly
south below 4500.

At or above
1000 (320)
but not later than
ALM 3/5.6 DME



SID	ROUTING
ETEDA 1F	Climb straight ahead, at or above 1000 (320) but not later than ALM 35.6 DME turn LEFT, 329° track to ETEDA.
GOGDO 1E	Climb straight ahead, at or above 1000 (320) but not later than ALM 35.6 DME turn LEFT, 007° track to GOGDO.

Flight simulation use only

UAAA/ALA
ALMATY

24 AUG 07 **10-3A**

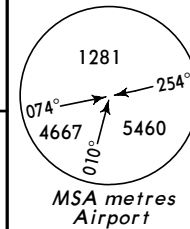
Eff Aug

ALMATY, KAZAKHSTAN

SID

Apt Elev
681m
2234'

QNH (**QFE**) on request Trans level: 2100 Trans alt: 1500 (**820**)
Radio interference may arise during departure of aircraft equipped with
VOR receivers, which do not meet the requirement on protection against
FM broadcasting stations.



GOGDO 1G [GOGD1G]
RWY 23 DEPARTURE
TO NORTH



GOGDO
N44 25.4 E077 26.3

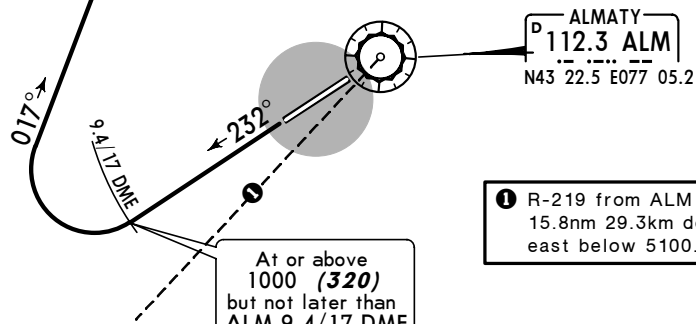
4277.8
D64.8/20
009°

D23.8 ALM
N43 46.3 E077 04.6
At 2400 or
at or above
3600

3972

ALT/HEIGHT CONVERSION
QNH (**QFE**)
1000 - 3278' (**320 - 1049'**)
1500 - 4918 (**820 - 2689'**)

FL CONVERSION
FL2100m FL69
FL2400m FL79
FL3600m FL118
FL5100m FL167



1 R-219 from ALM within
15.8nm 29.3km do not fly
east below 5100.

ROUTING

Climb straight ahead, at or above 1000 (**320**) but not later than ALM 9.417 DME turn RIGHT,
017° track to GOGDO.

Flight simulation use only

UAAA/ALA
ALMATY

24 AUG 07

10-3B

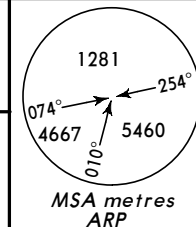
Eff Aug

ALMATY, KAZAKHSTAN

SID

Apt Elev
681m
2234'

QNH (QFE) on request Trans level: 2100 Trans alt: 1500 (820)
Radio interference may arise during departure of aircraft equipped with
VOR receivers, which do not meet the requirement on protection against
FM broadcasting stations.



DESOK 1E [DESO1E], KERUP 1E [KERU1E]
KERUP 1F [KERU1F]
RWY 05 DEPARTURES
TO EAST

ALT/HEIGHT CONVERSION

QNH (QFE)
1000 - 3278' (320 - 1049')
1500 - 4918 (820 - 2689')

FL CONVERSION

FL2100m FL69
FL2700m FL89
FL3600m FL118
FL3900m FL128
FL4500m FL148

TIRBA
N43 35.4 E077 29.2
(ALM R-049/D21.8/40.4)

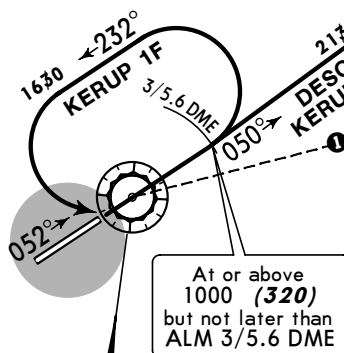
DESOK 1E
KERUP 1E
At or above
2700②

KERUP 1F
At or above
3900

DESOK
N44 16.5 E077 55.3

KERUP
N43 29.1 E077 46.4

At or above
4500



ALMATY
P 112.3 ALM
N43 22.5 E077 05.2

KERUP 1F
On return
At or above
2100

- ① ALM R-073 within 30.8nm 57km do not fly south below 4500.
- ② During flight activity at Zhetygen Apt cross TIRBA at or above 3600.

SID	ROUTING
DESOK 1E	Climb straight ahead, at or above 1000 (320), but not later than ALM 35.6 DME turn LEFT, 050° track to TIRBA, turn LEFT, 020° track to DESOK.
KERUP 1E If unable to comply request KERUP 1F	Climb straight ahead, at or above 1000 (320), but not later than ALM 35.6 DME turn LEFT, 050° track to TIRBA, turn RIGHT, 113° track to KERUP.
KERUP 1F	Climb straight ahead, at or above 1000 (320), but not later than ALM 35.6 DME turn LEFT to ALM, ALM R-050 to TIRBA, turn RIGHT, 113° track to KERUP.

CHANGES: QNH by default, trans alt

Based on Jeppesen charts © JEPPESEN SANDERSON, INC., 2002, 2003. ALL RIGHTS RESERVED.

Flight simulation use only

UAAA/ALA
ALMATY

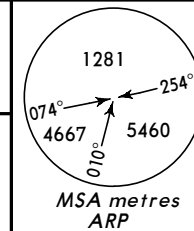
24 AUG 07 10-3C

Eff Aug

ALMATY, KAZAKHSTAN

SID

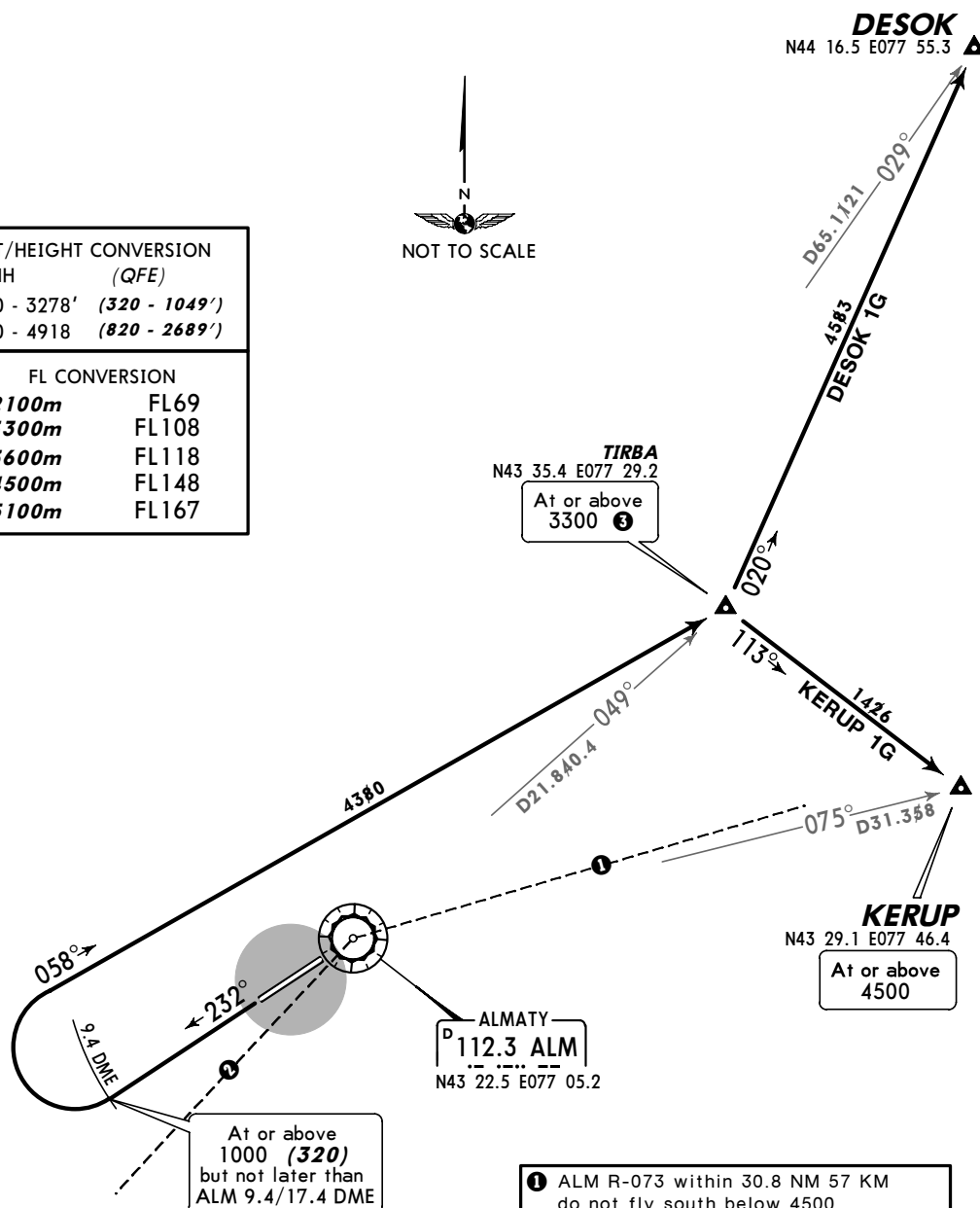
Apt Elev 681m 2234'
QNH (QFE) on request Trans level: 2100 Trans alt: 1500 (820)
Radio interference may arise during departure of aircraft equipped with VOR receivers, which do not meet the requirement on protection against FM broadcasting stations.



DESOK 1G [DESO1G], KERUP 1G [KERU1G]
RWY 23 DEPARTURES
TO EAST

ALT/HEIGHT CONVERSION
QNH (QFE)
1000 - 3278' (320 - 1049')
1500 - 4918 (820 - 2689')

FL CONVERSION
FL2100m FL69
FL3300m FL108
FL3600m FL118
FL4500m FL148
FL5100m FL167



- ① ALM R-073 within 30.8 NM 57 KM do not fly south below 4500.
- ② ALM R-219 within 15.8 NM 29.2 KM do not fly east below 5100.
- ③ During flight activity at Zhetygen Apt cross TIRBA at or above 3600.

SID	ROUTING
DESOK 1G	Climb straight ahead, at or above 1000 (320), but not later than ALM 9.417.4 DME turn RIGHT, 058° track to TIRBA, turn LEFT, 020° track to DESOK.
KERUP 1G	Climb straight ahead, at or above 1000 (320), but not later than ALM 9.417.4 DME turn RIGHT, 058° track to TIRBA, turn RIGHT, 113° track to KERUP.

Flight simulation use only

UAAA/ALA
ALMATY

24 AUG 07

10-3D

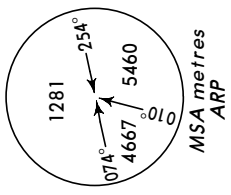
Eff Aug

ALMATY, KAZAKHSTAN

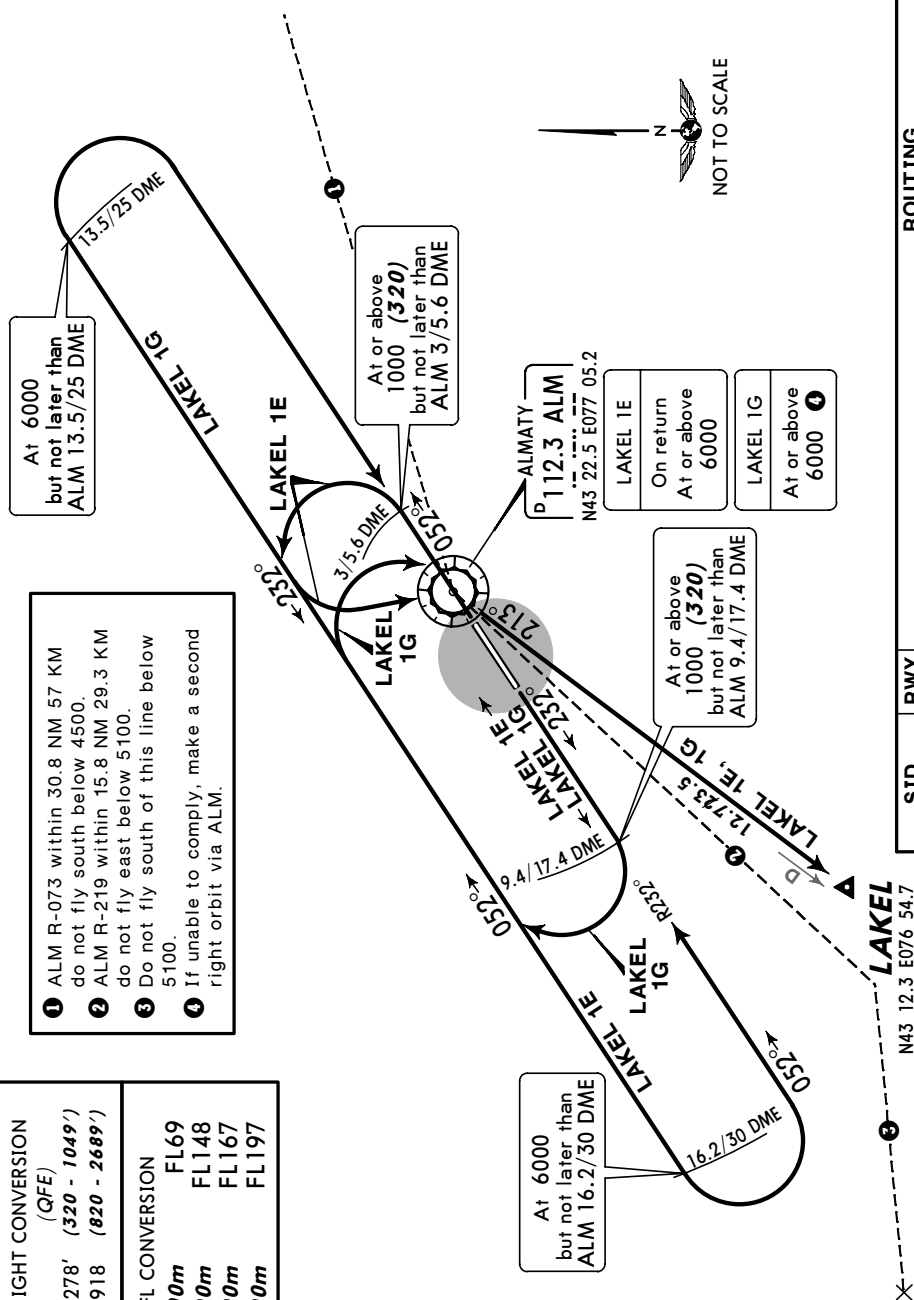
SID

Apt Elev
681m
2234'

QNH (QFE) on request Trans level: 2100 Trans alt: 1500 (820)
Radio interference may arise during departure of aircraft equipped with VOR receivers, which do not meet the requirement on protection against FM broadcasting stations.



LAKEL 1E [LAKE1E]
LAKEL 1G [LAKE1G]
RWYS 05, 23 DEPARTURES
TO SOUTHWEST



ALT/HEIGHT CONVERSION
QNH (QFE)
1000 - 3278' (320 - 1049')
1500 - 4918 (820 - 2689')

FL CONVERSION
FL2100m
FL4500m
FL5100m
FL6000m

- ALM R-073 within 30.8 NM 57 KM do not fly south below 4500.
- ALM R-219 within 15.8 NM 29.3 KM do not fly east below 5100.
- Do not fly south of this line below 5100.
- If unable to comply, make a second right orbit via ALM.

Flight simulation use only

UAAA/ALA
ALMATY

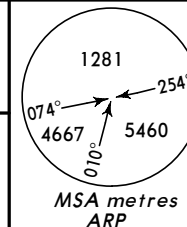
24 AUG 07 10-3E

Eff Aug

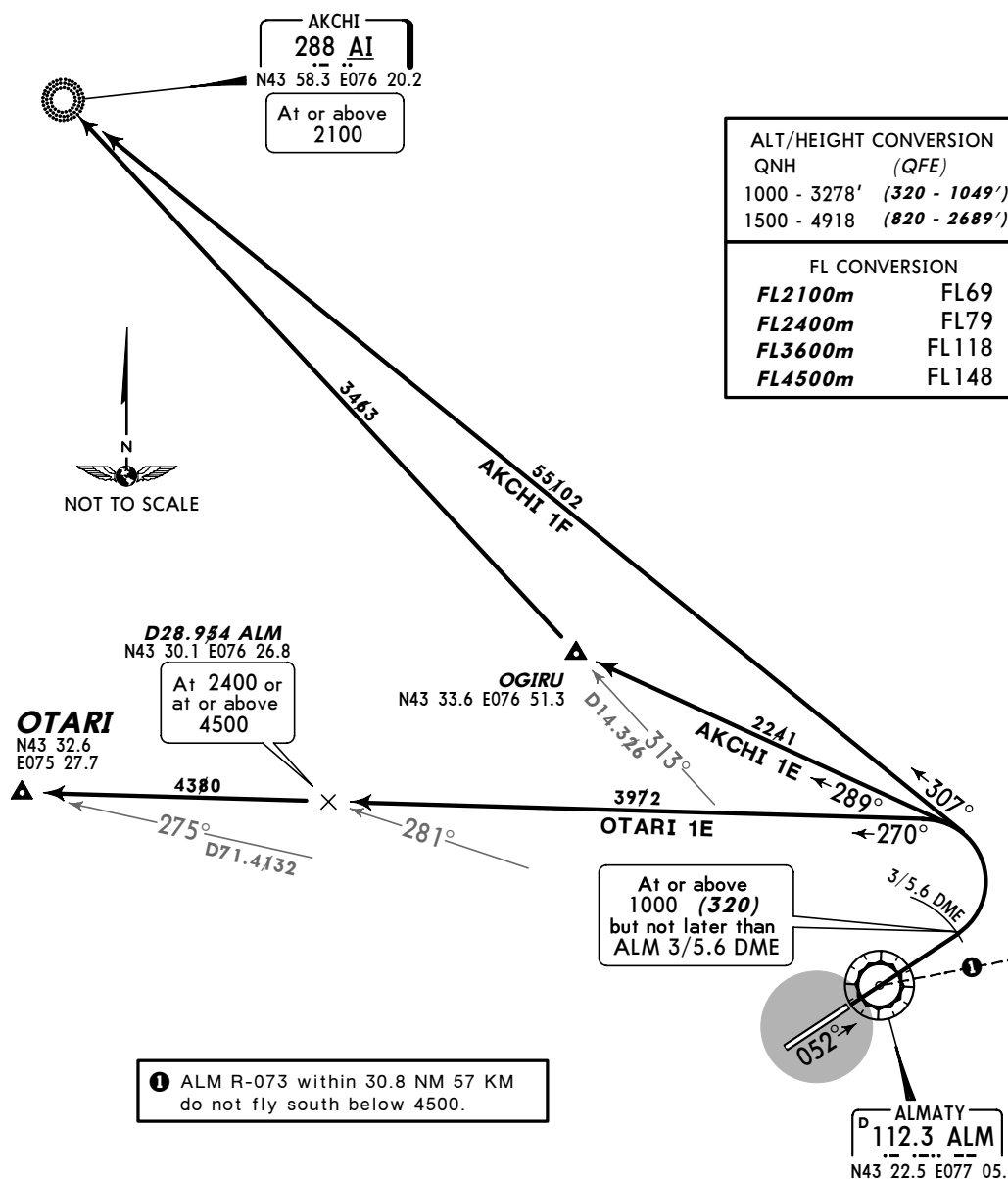
ALMATY, KAZAKHSTAN

SID

Apt Elev 681m 2234'
QNH (QFE) on request Trans level: 2100 Trans alt: 1500 (820)
Radio interference may arise during departure of aircraft equipped with VOR receivers, which do not meet the requirement on protection against FM broadcasting stations.



AKCHI 1E [A11E], AKCHI 1F [A11F]
OTARI 1E [OTAR1E]
RWY 05 DEPARTURES
TO WEST



ALT/HEIGHT CONVERSION
QNH (QFE)
1000 - 3278' (320 - 1049')
1500 - 4918 (820 - 2689')

FL CONVERSION
FL2100m FL69
FL2400m FL79
FL3600m FL118
FL4500m FL148

SID	ROUTING
AKCHI 1E	Climb straight ahead, at or above 3210' (986'), but not later than ALM 3 DME turn LEFT, 289° track to OGIRU, turn RIGHT, intercept 313° bearing to AI.
AKCHI 1F	Climb straight ahead, at or above 3210' (986'), but not later than ALM 3 DME turn LEFT, intercept 307° bearing to AI.
OTARI 1E	Climb straight ahead, at or above 3210' (986'), but not later than ALM 3 DME turn LEFT, 270° track to OTARI.

Flight simulation use only

UAAA/ALA
ALMATY

JEPPESSEN
24 AUG 07 10-3F

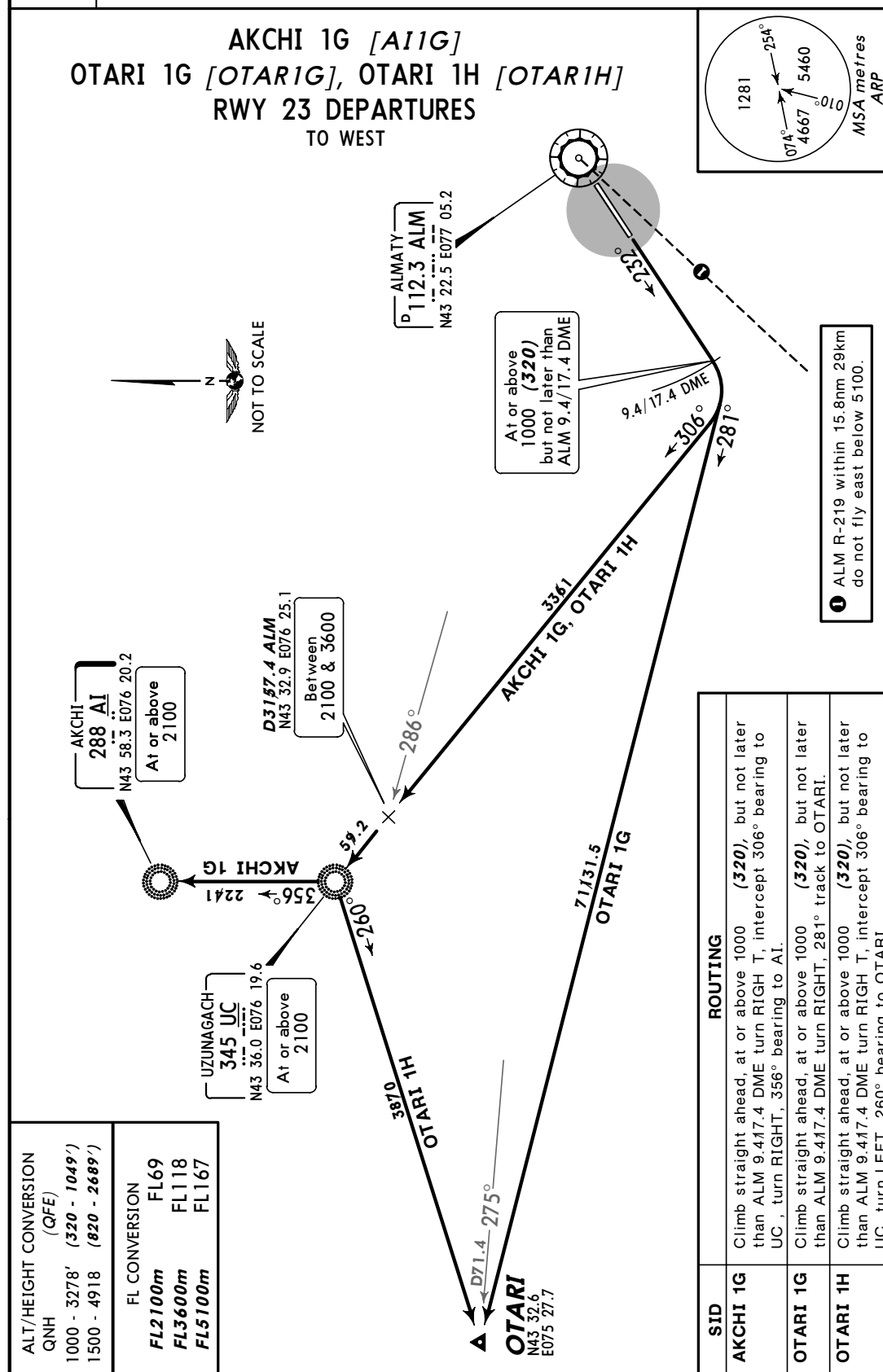
ALMATY, KAZAKHSTAN

Eff Aug

SID

Apt Elev
681m
2234'

QNH (QFE) on request Trans level: 2100 Trans alt: 1500 (820)
Radio interference may arise during departure of aircraft equipped with VOR receivers, which do not meet the requirement on protection against FM broadcasting stations.



Flight simulation use only

UAAA/ALA

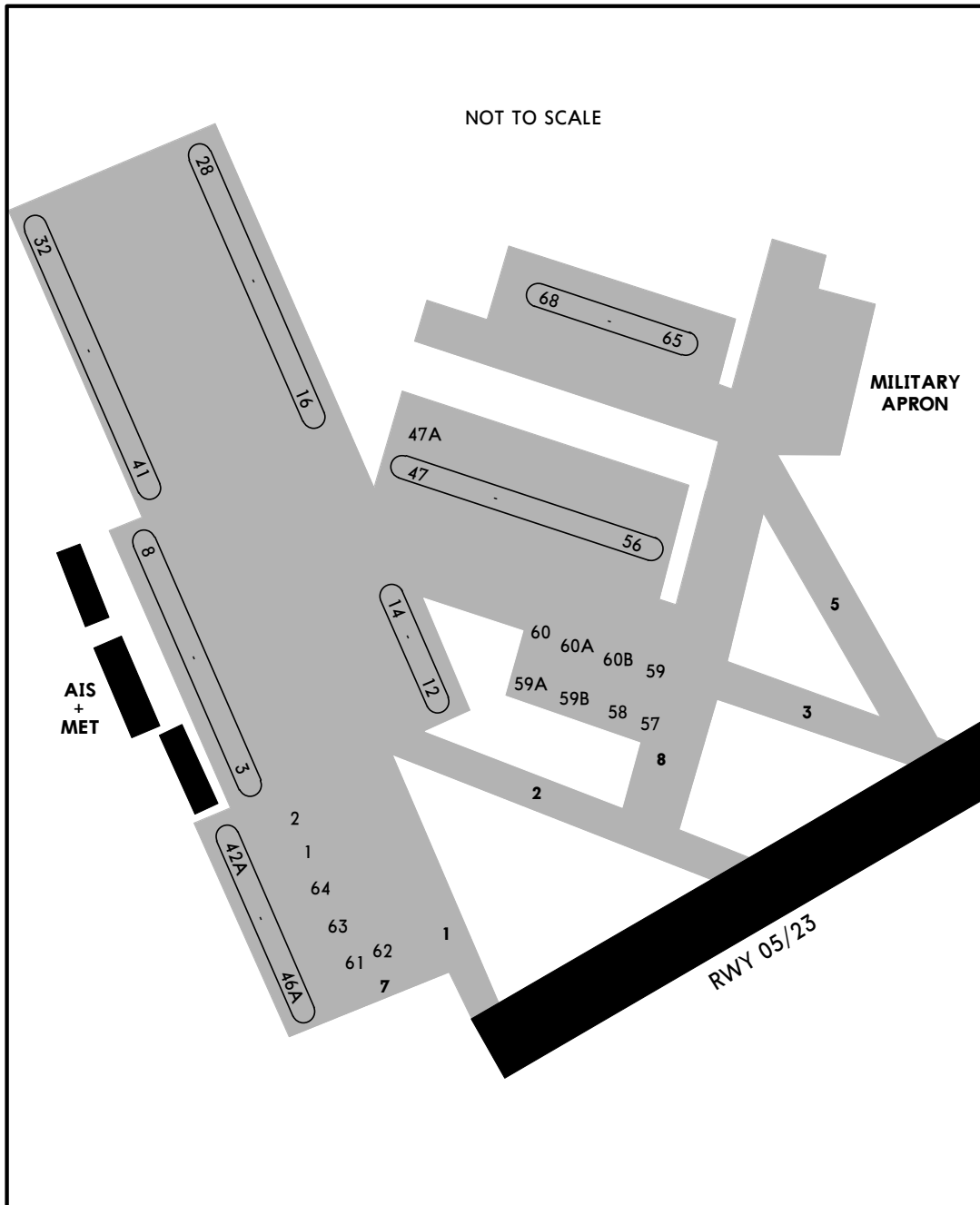
4 MAR 05

10-9A

Eff Aug

ALMATY, KAZAKHSTAN

ALMATY



INS COORDINATES		Stands 4, 12, 13, 59A and 60A available for acft up to B747-400. Stands 43A, 61 and 62 available for helicopters.
STAND No.	COORDINATES	
1, 2	N43 20.7 E077 00.9	
5, 6	N43 20.8 E077 00.8	
12, 13	N43 20.8 E077 00.9	
14	N43 20.8 E077 00.8	
57	N43 20.8 E077 01.3	
58, 59	N43 20.8 E077 01.2	
60	N43 20.8 E077 01.1	

CHANGES: None.

Based on Jeppesen charts © JEPPESEN SANDERSON, INC., 2002, 2006. ALL RIGHTS RESERVED.

Flight simulation use only

UAAA/ALA

14 MAY 04

10-9X

JAA MINIMUMS
ALMATY, KAZAKHSTAN
ALMATY

STRAIGHT-IN RWY		A	B	C	D
05	ILS	2424' (200')	2424' (200')	2424' (200')	2424' (200')
		R1000m	R1000m	R1000m	R1000m
	LOC	NOT AUTHORIZED			
	VOR DME	2590' (366')	2590' (366')	2590' (366')	2590' (366')
		R1700m	R1700m	R1700m	R1700m
	ALS out	R1700m	R1700m	R1800m	R2000m
23	NDB	2590' (366')	2590' (366')	2590' (366')	2590' (366')
		R1700m	R1700m	R1700m	R1700m
	ALS out	R1700m	R1700m	R1800m	R2000m
	CAT 2 ILS	2334' (100')	2334' (100')	2334' (100')	2334' (100') ❶
		RA 105' R350m	RA 105' R350m	RA 105' R350m	RA 105' R350m
	ILS	2434' (200')	2434' (200')	2434' (200')	2434' (200')
		R550m	R550m	R550m	R550m
	ALS out	R1000m	R1000m	R1000m	R1000m
	LOC	NOT AUTHORIZED			
	VOR DME	2630' (396')	2630' (396')	2630' (396')	2630' (396')
		R1800m	R1800m	R1800m	R1800m
	ALS out	R1800m	R1800m	R1800m	R2000m
	NDB	2630' (396')	2630' (396')	2630' (396')	2630' (396')
		R1800m	R1800m	R1800m	R1800m
	ALS out	R1800m	R1800m	R1800m	R2000m

❶ Missed apch climb gradient mim 4.0%.

TAKE-OFF RWY 05, 23

LVP must be in Force							
RL, CL & mult. RVR req		RL & CL	RL	RCLM (DAY only)	RL	RCLM (DAY only)	NIL
A	200m	200m	300m	300m	400m	400m	500m
B			300m ❷			500m ❸	500m ❸
C							
D		250m		500m ❸			

❷ NIGHT: 400m.

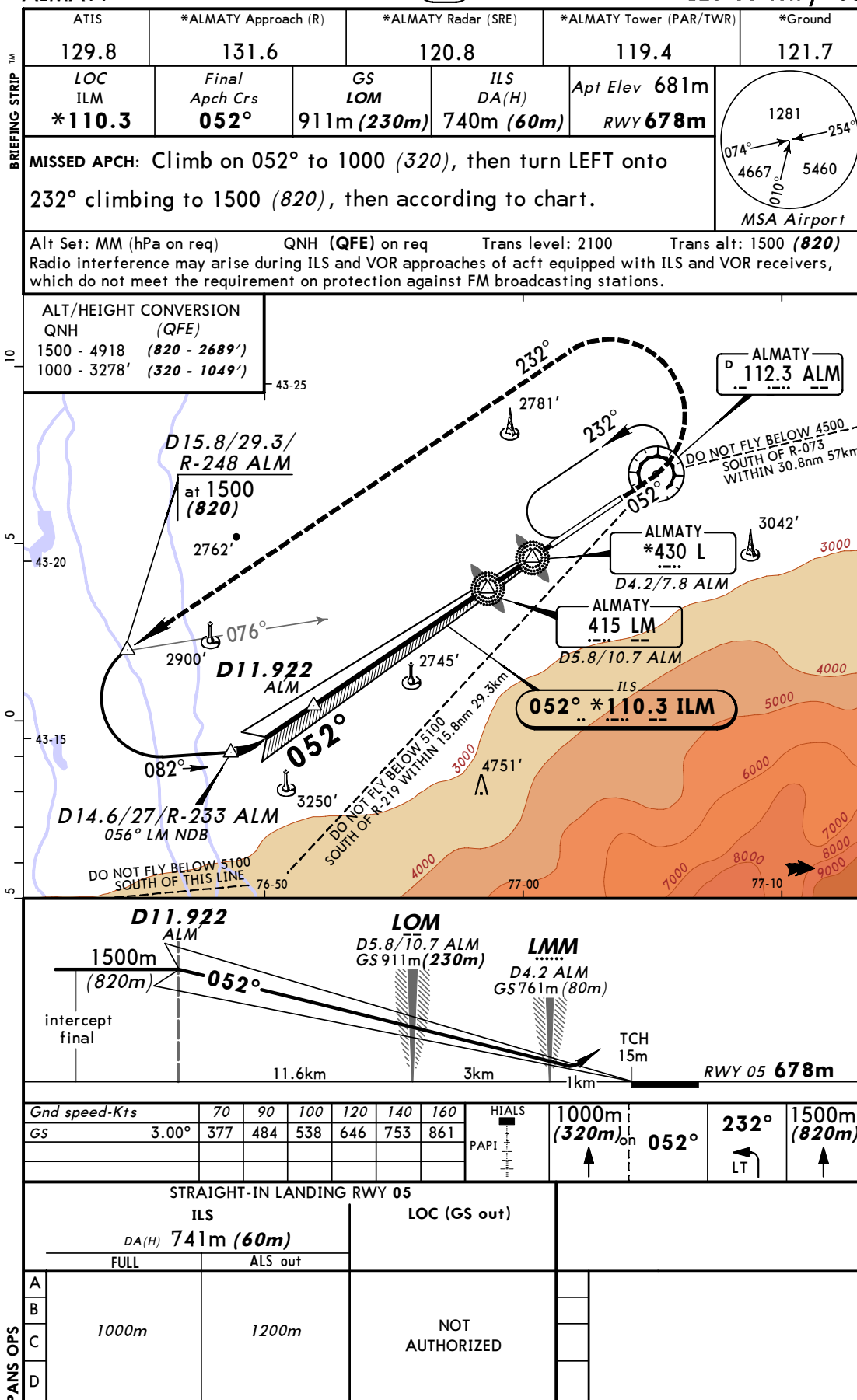
❸ NIGHT: 700m.

Flight simulation use only

UAAA/ALA
ALMATY

24 AUG 06 (11-1)

ALMATY, KAZAKHSTAN
ILS-A Rwy 05

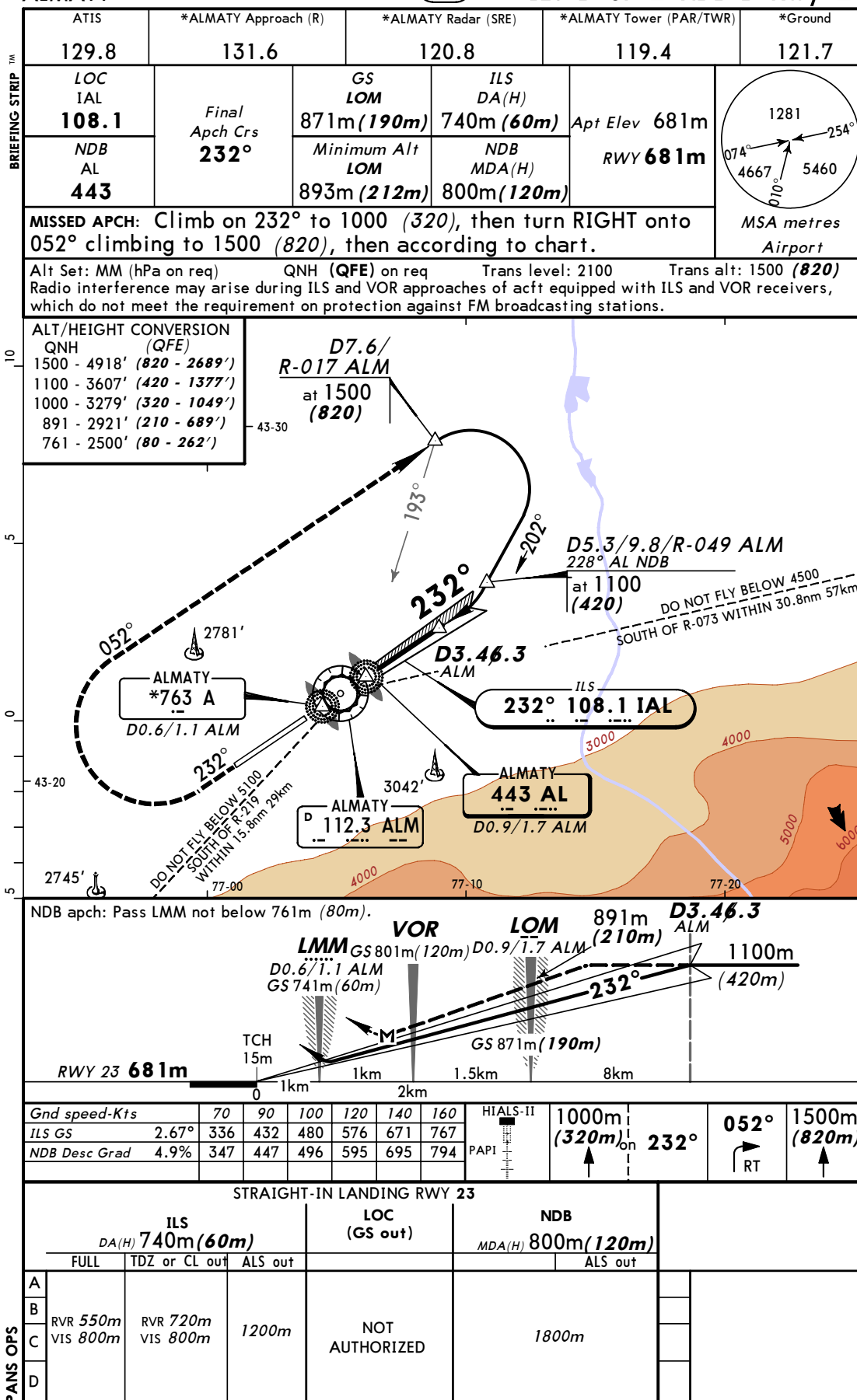


Flight simulation use only

UAAA/ALA
ALMATY

22 AUG 07 (11-4)

ALMATY, KAZAKHSTAN
ILS-B or 2 NDB-B Rwy 23

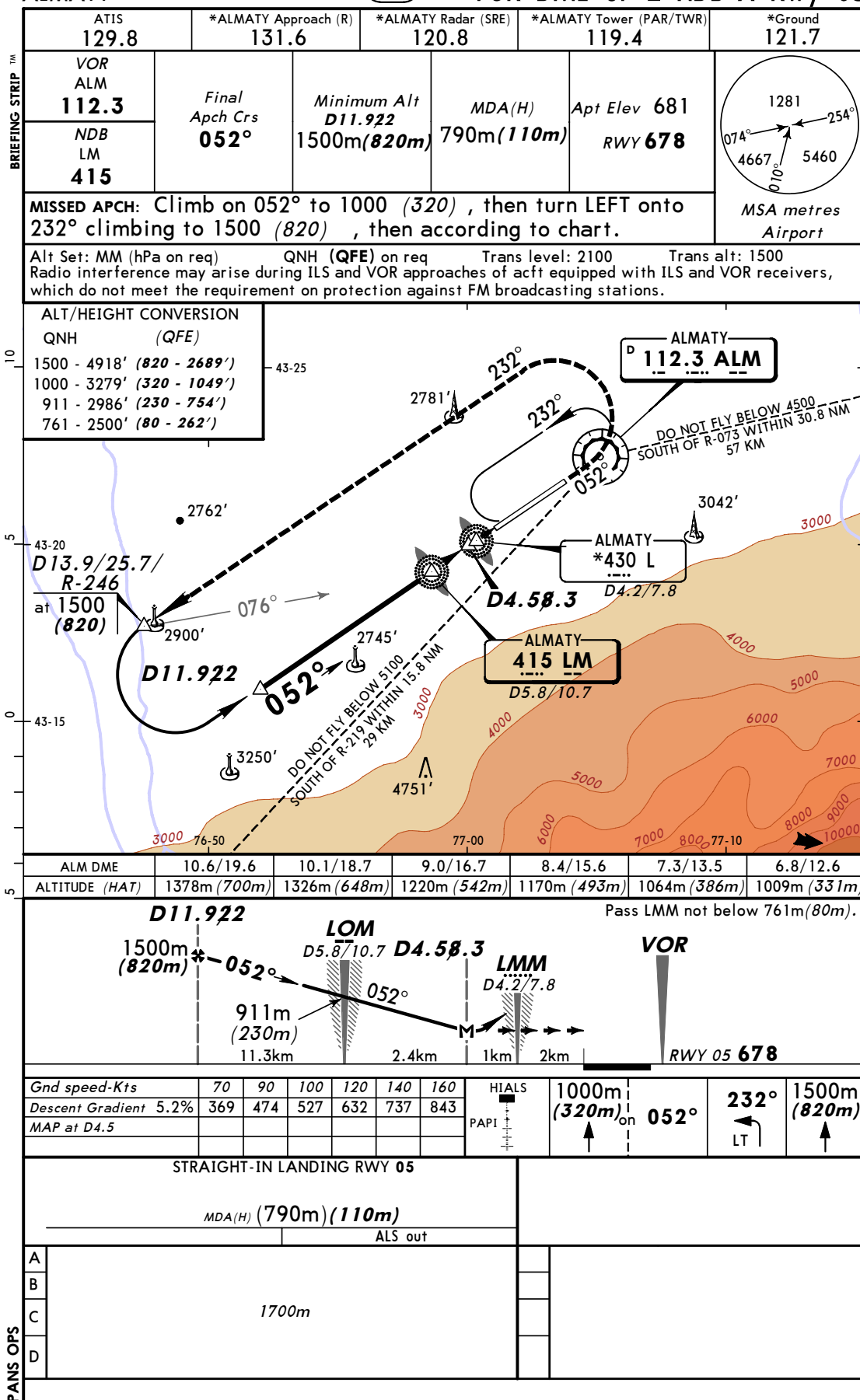


Flight simulation use only

UAAA/ALA
ALMATY

24 AUG 06 (13-1)

ALMATY, KAZAKHSTAN
VOR DME or 2 NDB-A Rwy 05



CHANGES: TA; missed apch.

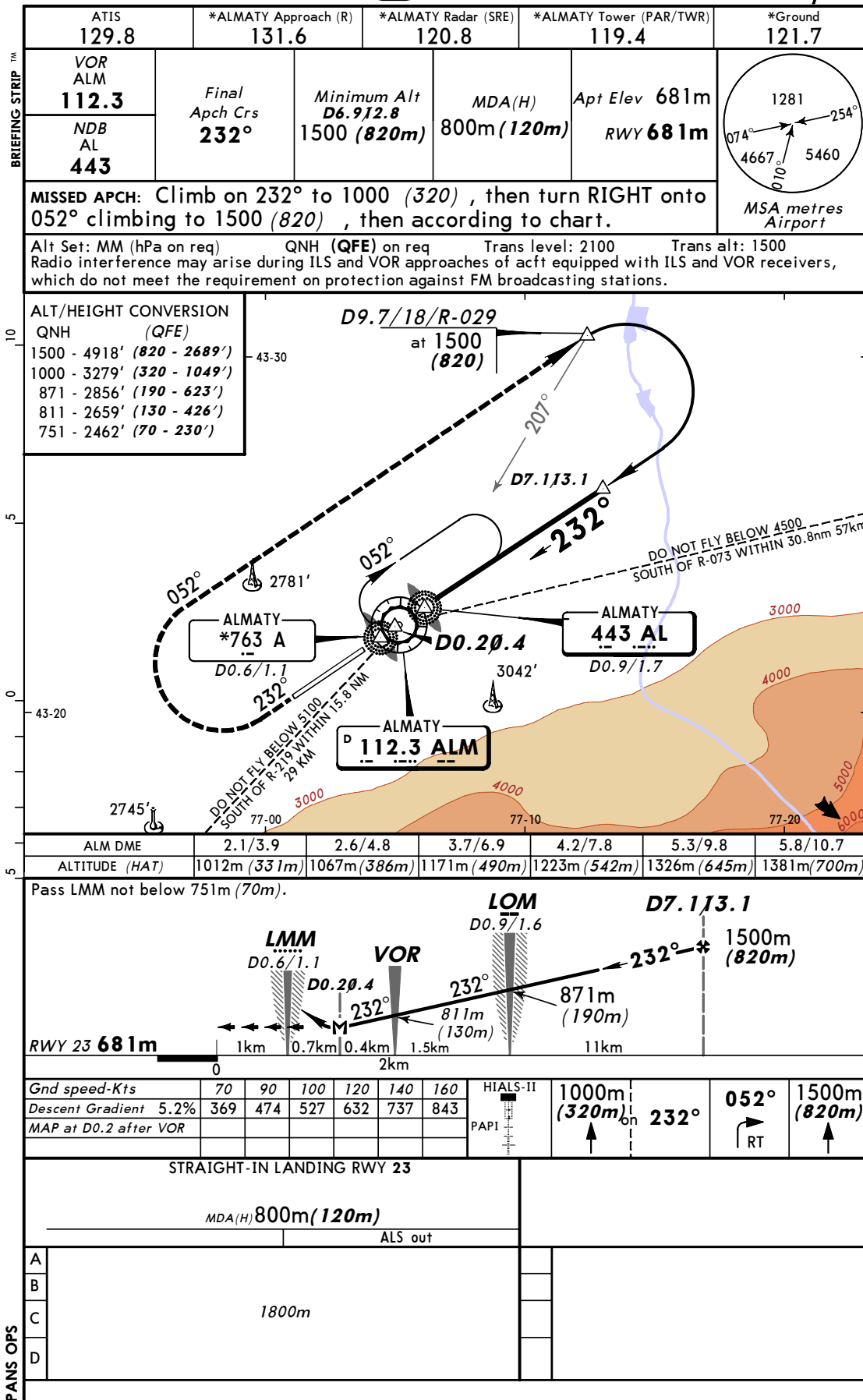
Based on Jeppesen charts © JEPPESEN SANDERSON, INC., 2002, 2006. ALL RIGHTS RESERVED.

Flight simulation use only

UAAA/ALA
ALMATY

24 AUG 07 (13-2)

ALMATY, KAZAKHSTAN
VOR DME or 2 NDB-A Rwy 23



CHANGES: TA; missed apch.

Based on Jeppesen charts © JEPPESEN SANDERSON, INC., 2002, 2006. ALL RIGHTS RESERVED.